

Install Recast Management Server with Proxy

Last Modified on 03.20.23

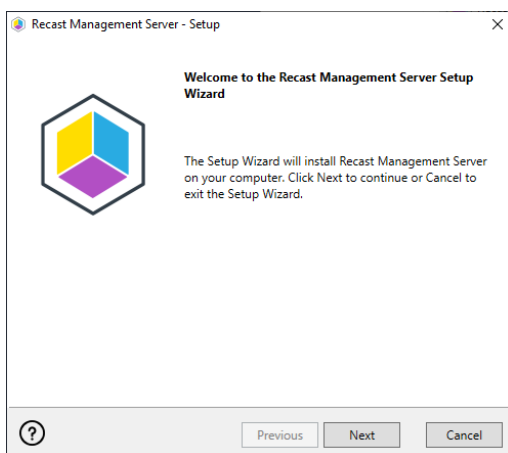
Recast Management Server software can be installed on its own server or on the primary Configuration Manager server.

Prerequisites

- Your system meets the Recast Management Server [hardware and software requirements](#)
- You've configured the appropriate [proxy service account permissions](#)

Run the Recast Management Server Installer

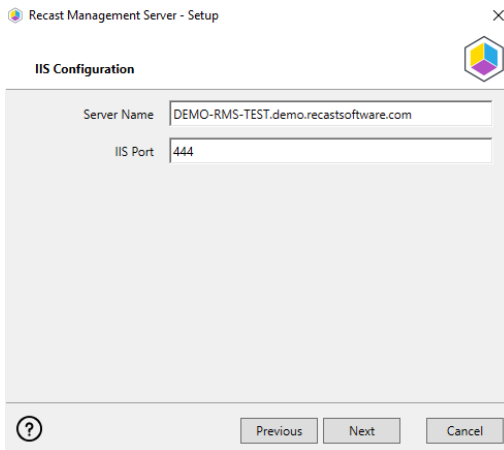
After downloading Recast Management Server from the [Recast Portal](#), run the installer and follow its prompts.



IIS

To configure IIS:

1. On the **IIS Configuration** page, change the **Server Name** only if the client is going to use a DNS alias.
2. Set the **IIS Port**. The default IIS Port is **TCP 444**, to prevent conflicts when Recast Management Server is installed on Configuration Manager servers. The IIS Port can be changed to 443, or any open TCP port, to suit your environment.

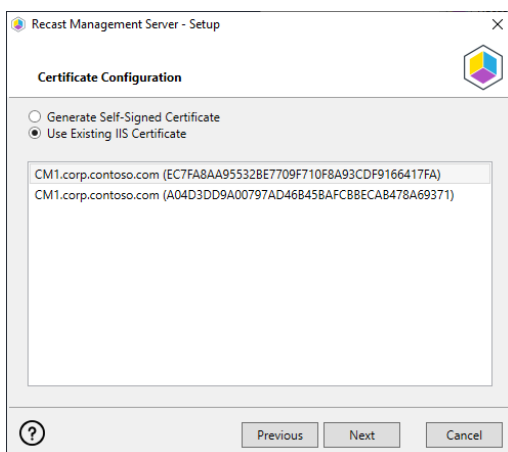


Certificates

Recast Management Server requires a certificate for secure communication with Right Click Tools and any Recast Proxies.

To configure a certificate:

On the **Certificate Configuration** page, you have the option to **Generate a Self-signed Certificate** or **Use an Existing IIS Certificate** issued by a trusted internal Certificate Authority.



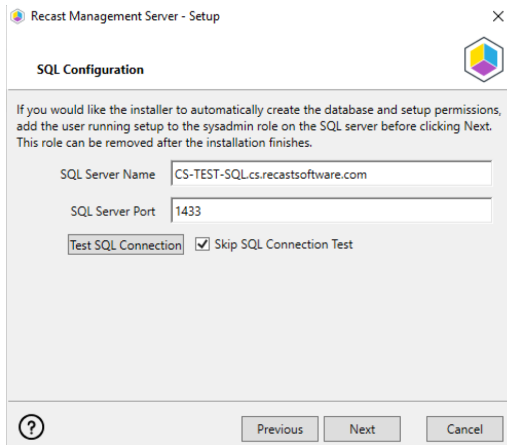
CERTIFICATE NOTES:

- The subject name or one of the subject alternative names of the certificate should match the server name in the URL that the Right Click Tools and Recast Proxies are pointed towards.
- The public key of self-signed certificates must be added to the Trusted Root Certificate Authorities store on your Recast Proxies.
- Right Click Tools will prompt for untrusted certificates and add them to an allowed list. To avoid this prompt, import the public key of the Recast Management Server certificate into the Trusted Root Certificate Authorities store on the devices where the Right Click Tools are installed.
- The certificate can be changed later by editing the Binding in IIS Manager.
- For instructions on importing a certificate to a local machine, see [Certificate used by Recast Management Server is not trusted.](#)

SQL Server

There are two types of permissions that will allow the Recast Management Server installer to automatically create the SQL database with all the necessary permissions:

- The user account running the installation can be assigned a SysAdmin role in the SQL instance. If the user account has permission to connect remotely, use the **Test SQL Connection** button to check connectivity to the SQL Server during the install. After the RMS installer creates the database, the SysAdmin permission can be removed.
- The computer account of the Recast Management Server can be granted **db_creator** permissions. In this case, check the **Skip SQL Connection Test** box.



SQL SERVER NOTES:

- The default SQL Server Port Number is 1433.
- A fully licensed version of SQL is strongly recommended to avoid the 10GB storage limitation of SQLExpress.
- After the SQL database is created, [simplify the database recovery model](#) to prevent storage issues.
- **Remote SQL Server:** The computer account of Recast Management Server will need db_owner permissions to create the database on the remote device. If the account running the Recast Management Server installer does not have permission to create a SQL database, the database administrator can [pre-create the RecastManagementServer database](#) and manually give the computer account db_owner permissions.
- **Local SQL Server:** The IIS AppPool\Recast Management Server account will need db_owner permissions to create the database on the local device. Alternatively, the database administrator can [pre-create the database](#) and give the IIS AppPool\Recast Management Server account db_owner permissions to the database. The IIS AppPool\Recast Management Server account will not exist until after the installation completes, so the permissions will need to be given after installation.

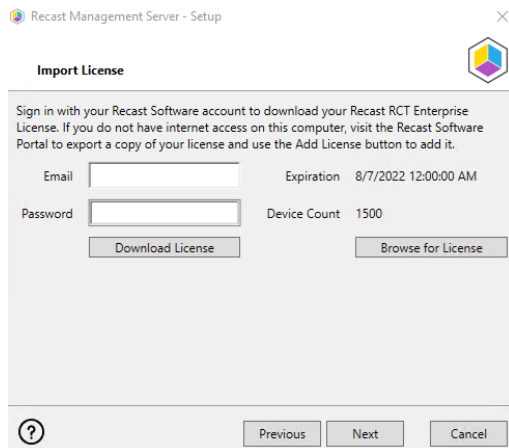
Import License

You can download and import your Recast licenses when installing Recast Management Server.

To download your Enterprise license:

1. On the **Import License** page, enter your Recast Portal email address and password.
2. Click **Download License**. The license information will appear in the right-hand column.

NOTE: If your server does not have internet access, click **Browse for License** to browse the filesystem for a license file that has been exported from the [Recast Portal](#).



The 'Import License' dialog box in the Recast Management Server - Setup window. It contains instructions to sign in with a Recast Software account or use a local license file. It features input fields for 'Email' and 'Password', and read-only fields for 'Expiration' (8/7/2022 12:00:00 AM) and 'Device Count' (1500). There are 'Download License' and 'Browse for License' buttons. At the bottom are 'Previous', 'Next', and 'Cancel' buttons.

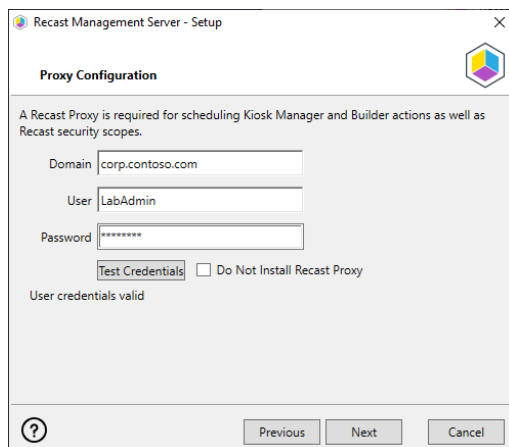
Proxy

Recast Proxy must be deployed separately, after Recast Management Server installation, if the proxy is being installed on a server other than the Recast Management Server. For instructions, see [Install Recast Proxy Separately](#).

NOTE: Proxy configuration is optional for Privilege Manager where Active Directory or Microsoft Entra ID objects are not used to target rules.

To configure the proxy during RMS installation:

On the installer's **Proxy Configuration** page, enter the service account **Domain**, **Username**, and **Password** and click **Test Credentials** to verify service account details.

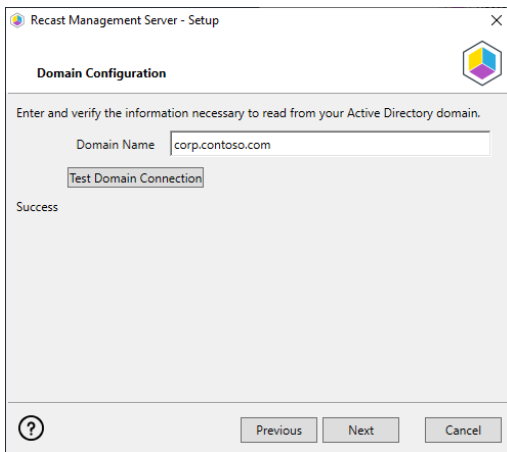


The 'Proxy Configuration' dialog box in the Recast Management Server - Setup window. It explains that a Recast Proxy is required for scheduling Kiosk Manager and Builder actions. It contains input fields for 'Domain' (corp.contoso.com), 'User' (LabAdmin), and 'Password' (masked with asterisks). Below the password field is a 'Test Credentials' button and an unchecked checkbox labeled 'Do Not Install Recast Proxy'. A status message 'User credentials valid' is displayed. At the bottom are 'Previous', 'Next', and 'Cancel' buttons.

Domain

To configure your domain:

1. On the **Domain Configuration** page, enter the **Domain Name**.
2. Click **Test Domain Connection** to verify that the service account has access to read from your domain.



Configuration Manager

NOTE: Configuration Manager does not need to be set up for Privilege Manager.

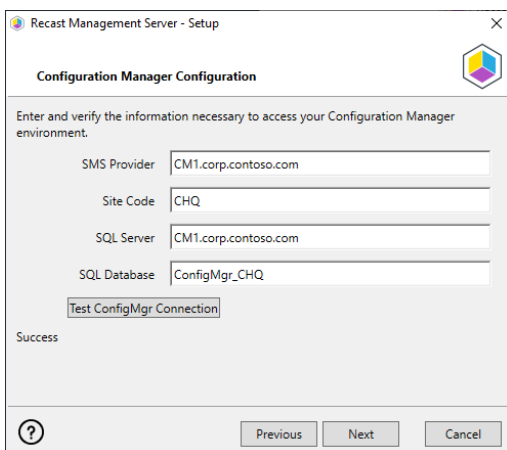
To set up your Configuration Manager for the proxy:

1. On the **Configuration Manager Configuration** page, enter the following information:

- Name of the site server that has your **SMS Provider** role
- **Site Code**
- Name of the **SQL Server** where your Configuration Manager SQL database is located
- **SQL Database** name

NOTE: You can skip the **Configuration Manager Configuration** page during Recast Management Server or Recast Proxy installation by removing any information from the text fields, selecting **Test ConfigMgr Connection** and the **Skip ConfigMgr Verification** checkbox, and clicking **Next**.

2. Click **Test ConfigMgr Connection** to check that the service account has access.



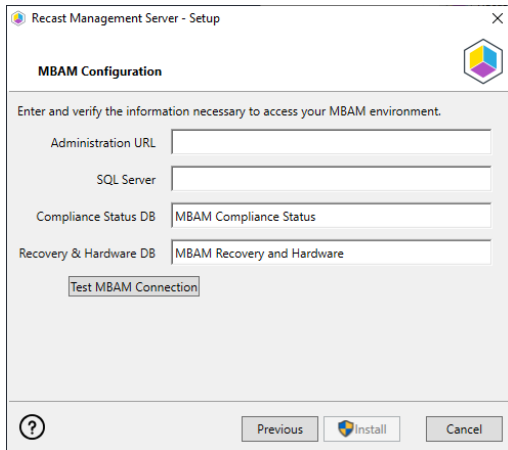
MBAM

MBAM configuration is only required for a separate MBAM Server. If you are using the ConfigMgr integrated BitLocker or AD, you can skip this section and click **Install**.

NOTE: MBAM does not need to be configured for Privilege Manager or Application Manager.

To configure MBAM:

1. Tap **Click Here to Configure MBAM**.
2. Add your **Administration URL** and **SQL Server** information.
3. Click **Test MBAM Connection** to verify that the service account has access to MBAM.
4. Click **Install**.



The image shows a Windows-style setup window titled "Recast Management Server - Setup". Inside, there's a section labeled "MBAM Configuration" with a sub-instruction: "Enter and verify the information necessary to access your MBAM environment." Below this, there are four text input fields: "Administration URL", "SQL Server", "Compliance Status DB" (with "MBAM Compliance Status" pre-filled), and "Recovery & Hardware DB" (with "MBAM Recovery and Hardware" pre-filled). A "Test MBAM Connection" button is located below the last two fields. At the bottom of the window, there are three buttons: a help icon (?), "Previous", "Install" (highlighted with a blue border), and "Cancel".

Verify Your Installation

When the installation is complete, verify that you are able to open the Recast Management Server by navigating to `https://ServerFQDN:Port` in a web browser (Chrome, Edge, or Firefox are recommended).

When asked to sign in, enter the username and password for the account used to install the Recast Management Server.

Installation Log Location

To verify the installation logs for Recast Management Server and Recast Proxy (when installed together), navigate to `C:\Users\user account running the install\AppData\Local\Temp`

NOTE: The log is named something like `Recast_Management_Server_2022*****.log`